

Removals 1.28.26

Tree Quantity: 19

Proposal Value: \$3,070

January 28, 2026

Proposal #: 1225664
















Tree Care Service Address/Location





Verona Walk Removals 1/28/2026
7046 Toscana Ct
Naples, FL 34114

Greenscapes

Linzy Clark
lclark@greenscapesfl.com
tel:239-877-2552

	Species	Qty	Service	Price
 #1	Queen Palm 7055 Toscana Court	1	Removal and Grind	\$150
 #2	Queen Palm 7024 Leopardi Ct	1	Removal and Grind	\$150
 #3	Queen Palm 7163 Marconi Ct	1	Removal and Grind	\$150
 #4	Foxtail Palm 7255 Carducci Ct	1	Palm Prune	\$20
 #5	Tabebuia Species 7255 Carducci Ct	1	Clearance Prune	\$50
 #6	Queen Palm 7205 Veronawalk Bellini	1	Removal and Grind	\$150
 #7	Queen Palm 7205 Veronawalk Bellini	1	Removal and Grind	\$150
 #8	Queen Palm 7620 Garibaldi Ct	1	Removal and Grind	\$150
 #9	Queen Palm 7842 Orvieto Ct	1	Removal and Grind	\$150
 #10	Queen Palm 7546 Garibaldi Ct	1	Removal and Grind	\$150
 #11	Queen Palm 7648 Rozzini Ln	1	Removal and Grind	\$150
 #12	Queen Palm 7934 Valentina Ct	1	Removal and Grind	\$150
 #13	Hong Kong Orchid Tree 7934 Valentina Ct	1	Removal and Grind	\$600



	Species	Qty	Service	Price
 #14	Queen Palm 8014 Valentina Ct	1	Removal and Grind	\$150
 #15	Queen Palm 7492 Firenze Ln	1	Removal and Grind	\$150
 #16	Queen Palm 8531 Benelli Ct	1	Removal and Grind	\$150
 #17	Queen Palm 8528 Benelli Ct	1	Removal and Grind	\$150
 #18	Queen Palm 8523 Karina Ct	1	Removal and Grind	\$150
 #19	Queen Palm 8638 Palermo Ct	1	Removal and Grind	\$150
			Total	\$3,070

General Tree Care Objective Definitions

Clearance Prune

Remove or subordinate any branches that interfere with pedestrians, buildings or infrastructure (i.e. street signs etc). Recommended clearances are sidewalks (8'), streets (14'), side of buildings (3') and above roofs (6').

Palm Prune

Removal of any fronds hanging below 180 degrees (i.e. 9/3 on a clock). Also includes removal of any dead fronds, flower stalks or seed pods within the canopy.

Removal and Grind

Complete removal of tree. Once tree has been removed the stump will be grinded to the level that the wheel head on the grinder can reach (typically 8-12" below grade). Please note that stump grinding doesn't include grinding of surface roots, unless specified.

Verona Walk Removals 1/28/2026



- Legend (19)**
- Queen Palm (16)
 - Tabebuia Species (1)
 - Hong Kong Orchid... (1)
 - Foxtail Palm (1)

Verona Walk Removals 1/28/2026

Removals 1.28.26



January 28, 2026

Syagrus romanzoffiana ID# 1
Queen Palm



January 28, 2026

Syagrus romanzoffiana ID# 2
Queen Palm



January 28, 2026

Syagrus romanzoffiana ID# 3
Queen Palm



Removal and Grind

Wilt 7055 Toscana 12565



Removal and Grind

Wilt 7024 leapardy



Removal and Grind

7163 marconia

Verona Walk Removals 1/28/2026

Removals 1.28.26



January 28, 2026

Syagrus romanzoffiana ID# 3
Queen Palm



January 28, 2026

Wodyetia bifurcata ID# 4
Foxtail Palm



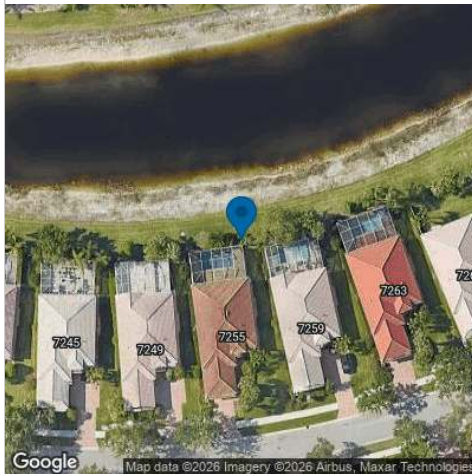
January 28, 2026

Tabebuia spp. ID# 5
Tabebuia Species



Removal and Grind

7163 marconia



Palm Prune

7255 Carducci 12463



Clearance Prune

Verona Walk Removals 1/28/2026

Removals 1.28.26



January 28, 2026

Syagrus romanzoffiana ID# 6
Queen Palm



January 28, 2026

Syagrus romanzoffiana ID# 7
Queen Palm



January 28, 2026

Syagrus romanzoffiana ID# 8
Queen Palm



Removal and Grind

7201 Bellini Wilt



Removal and Grind

Trunk cracking



Removal and Grind

Wilt is in the area 7616 Garabaldi
11701

Verona Walk Removals 1/28/2026

Removals 1.28.26



January 28, 2026

Syagrus romanzoffiana ID# 9
Queen Palm



January 28, 2026

Syagrus romanzoffiana ID# 10
Queen Palm



January 28, 2026

Syagrus romanzoffiana ID# 10
Queen Palm



Removal and Grind

Wilt 7842 Orvieto 12544



Removal and Grind

7546 Garibaldi 12568



Removal and Grind

7546 Garibaldi 12568

Verona Walk Removals 1/28/2026

Removals 1.28.26



January 28, 2026

Syagrus romanzoffiana ID# 11
Queen Palm



January 28, 2026

Syagrus romanzoffiana ID# 12
Queen Palm



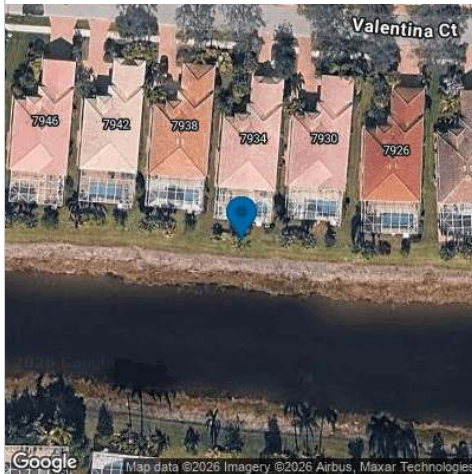
January 28, 2026

Bauhinia x blakeana ID# 13
Hong Kong Orchid Tree



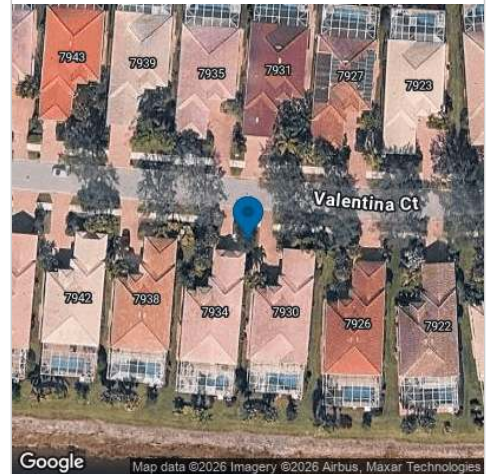
Removal and Grind

Wilt 7652 Rozzini 12572



Removal and Grind

Wilt 7934 Valentina 12548



Removal and Grind

7934 valentine

Verona Walk Removals 1/28/2026

Removals 1.28.26



January 28, 2026

Syagrus romanzoffiana ID# 14
Queen Palm



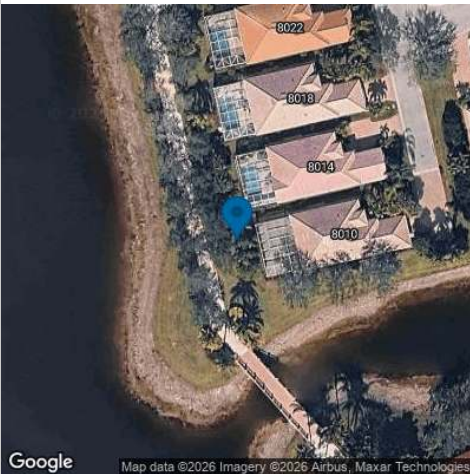
January 28, 2026

Syagrus romanzoffiana ID# 15
Queen Palm



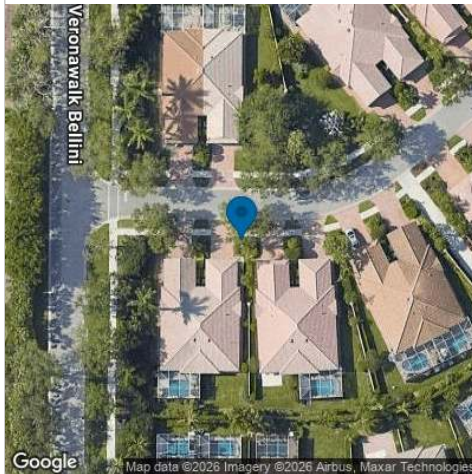
January 28, 2026

Syagrus romanzoffiana ID# 16
Queen Palm



Removal and Grind

8010 Valentina 12569 wilt



Removal and Grind

7484 feienzi 12573



Removal and Grind

8531 benelli Wilt

Verona Walk Removals 1/28/2026

Removals 1.28.26



January 28, 2026

Syagrus romanzoffiana ID# 17
Queen Palm



January 28, 2026

Syagrus romanzoffiana ID# 18
Queen Palm



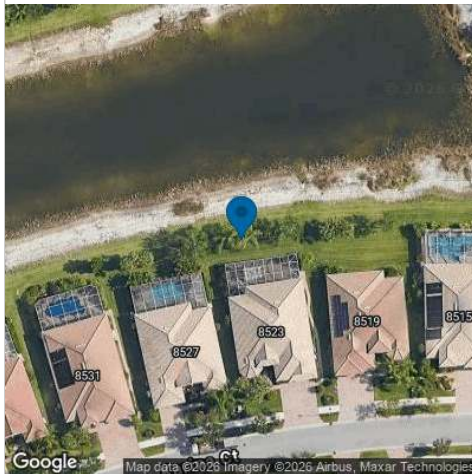
January 28, 2026

Syagrus romanzoffiana ID# 19
Queen Palm



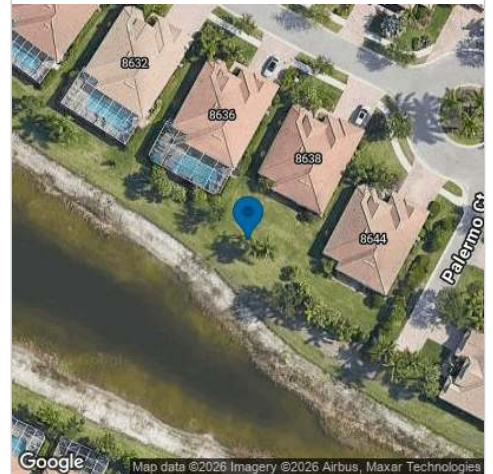
Removal and Grind

Wilt 8528 benelli 12549



Removal and Grind

Decline 8523 karinana 12542



Removal and Grind

Decline 8638 Palermo 12567

Terms and Conditions for Tree Care Services

1. **Performance by Company:**

Work crews shall arrive at the job site unannounced unless otherwise noted herein. The Company shall attempt to meet all performance dates, but shall not be liable for damages due to delays from inclement weather or other causes beyond our control.

2. **Workmanship:**

All work will be performed in a professional manner by experienced personnel outfitted with the appropriate tools and equipment to complete the job properly. Unless otherwise indicated herein, The Company will remove wood, brush and debris incidental to the work.

3. **Insurance:**

The Company is insured for liability resulting from injury to persons or property, and all its employees are covered by Workers Compensation Insurance.

4. **Ownership:**

The customer warrants that all trees, plant material and property upon which work is to be performed are either owned by him/her or that permission for the work has been obtained from the owner.

The Company is to be held harmless from all claims for damages resulting from the customer's failure to obtain such permission.

5. **Limitations:**

The customer must identify all non- public utilities. The Company assumes no responsibility for the location of or damage to underground utilities not clearly marked by the customer prior to commencement of site services. Stump grinding and removals as proposed will occur where public utilities allow.

6. **Terms of Payment:**

All accounts are net payable upon receipt of invoice. A service charge of 1.5% will be added to accounts not fully paid 30 days subsequent to the invoice date. If outside assistance is used to collect the account, the customer is responsible for all costs associated with the collection, including, but not limited to, attorney fees and court costs.

Customer

January 28, 2026

Signature

Date

January 28, 2026

Printed Name

Date

Tree Care Service Provider

Linzy Clark

January 28, 2026

Signature

Date

Linzy Clark

January 28, 2026

Printed Name

Date